

Bike eLocker Installation Update

Bicycle & Active
Transportation Advisory
Committee

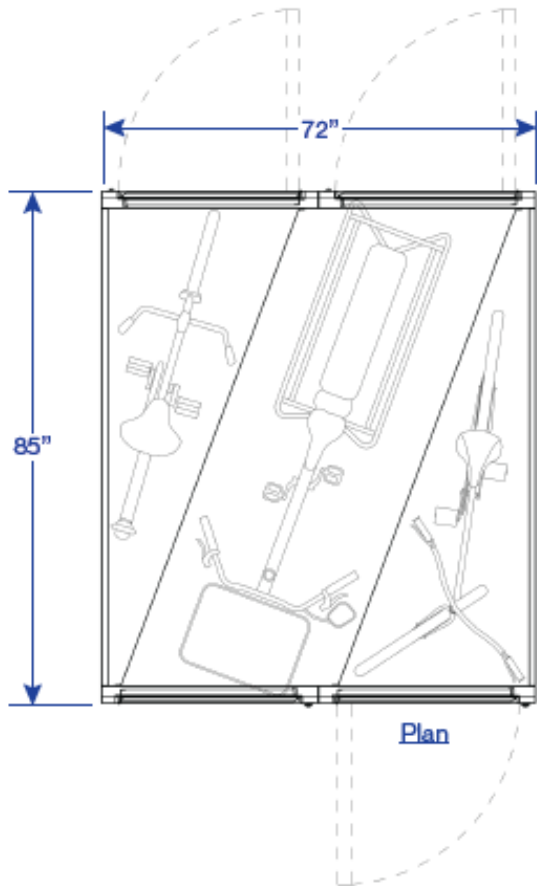
January 16, 2025



Keep white box area clear if possible.
Video will cover your content



New eLocker Model



- Addresses design detail that was a focus of thieves
 - Did not lead to thefts but caused damage
- Ability to park larger bikes
- Remote contents monitoring
- Potential 2nd level with pull-down tray

Keep blue box area clear if possible.
Video will cover your content.

Installation Overview

Over 220 new spaces planned

- Approximately 325 existing
- VTA installing more south of Tamien

Goals

- Use grant funds by deadline
- Serve growing demand and people with larger bikes
- Provide parking at more station access points

Factors

- Ridership
- Available station space

Keep blue box area clear if possible.
Video will cover your content.



Funding Overview

- Transportation Fund for Clean Air (Bay Area Air Quality Management District)
 - April expiration
- Transit and Intercity Rail Capital Program (State)
 - August expiration

Keep blue box area clear if possible.
Video will cover your content.



Stations without Plans for New eLockers

- San Francisco: Bike valet and limited space
- 22nd Street: Limited space
- Bayshore: Low existing use
- South San Francisco: Limited space
- Weekend/Special Event Stations

Keep blue box area clear if possible.
Video will cover your content.



San Bruno

Existing: 8 spaces on east side of tracks north of San Bruno Ave

- Adjacent to parking lot north of San Bruno Avenue

Proposed: 6 standard spaces and 4 XL spaces in Posey Park

- About 1,000 feet from existing
- West of tracks, south of San Bruno Avenue
- Former mechanical locker home
- Requested by City



if possible.
tent.

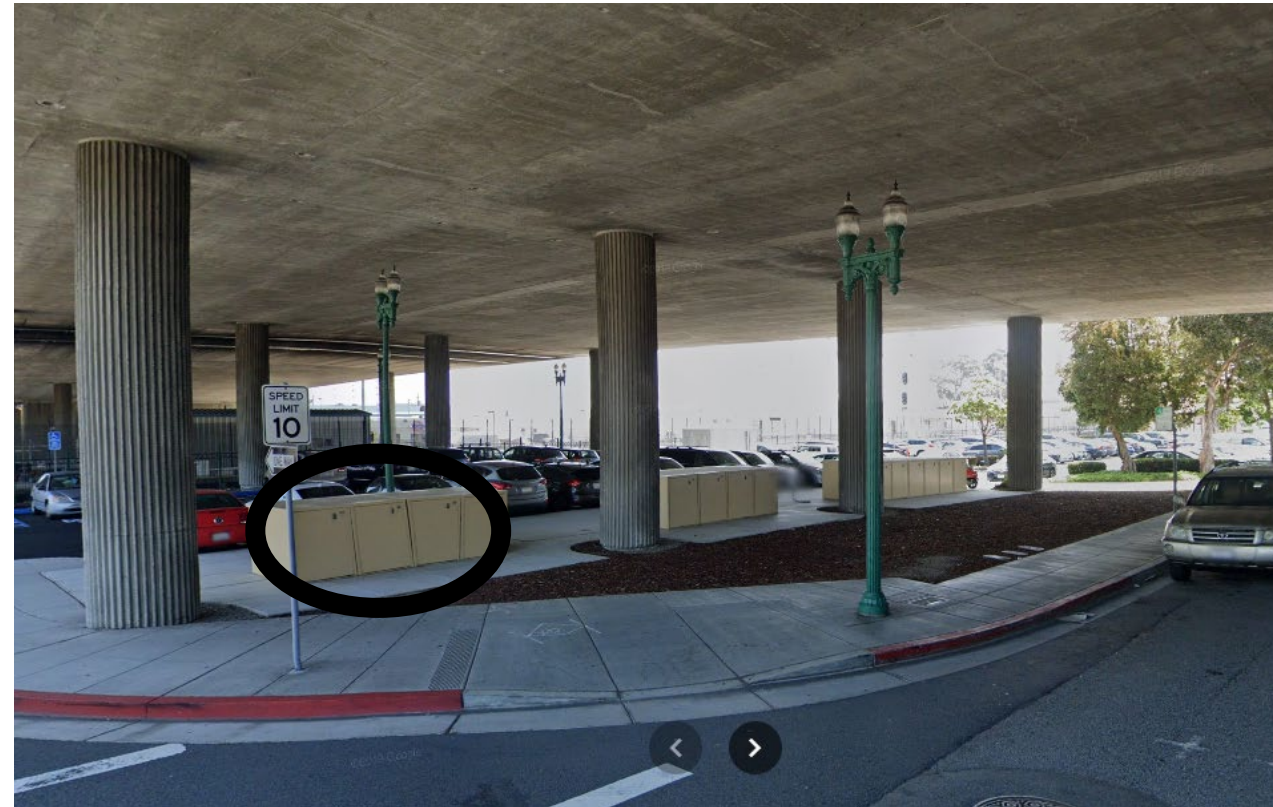


Millbrae

Existing: 32 spaces near southbound platform

Proposed: Under Millbrae Avenue along California Drive – details being finalized

- Requests for XL spaces
- Former home of mechanical lockers



Keep blue box area clear if possible.
Video will cover your content.



Burlingame

Existing: 12 standard along southbound platform

Proposed: 5XL and 1 standard along northbound platform

- Close to north track crossing



Keep blue box area clear if possible.
Video will cover your content.

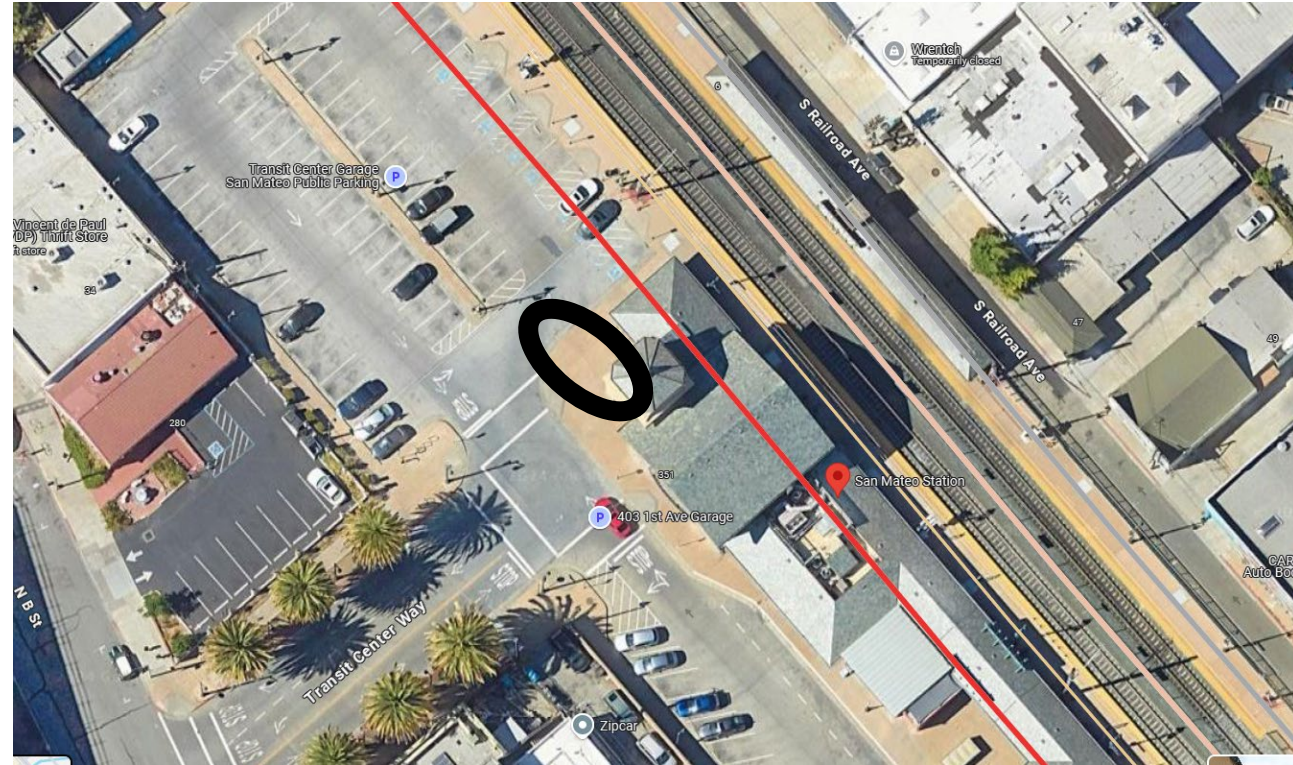


San Mateo

Existing: 8 spaces along southbound platform; 16 near ramp to parking garage

Proposed: Layout being finalized

- Close to stairway, tunnel to northbound platform



Keep blue box area clear if possible.
Video will cover your content.



Hayward Park

Existing: 4 spaces near northbound platform

- Near south track crossing

Proposed: 2 XL and 4 standard near northbound platform

- About 550' from existing
- Near north track crossing, access path



Keep blue box area clear if possible.
Video will cover your content.



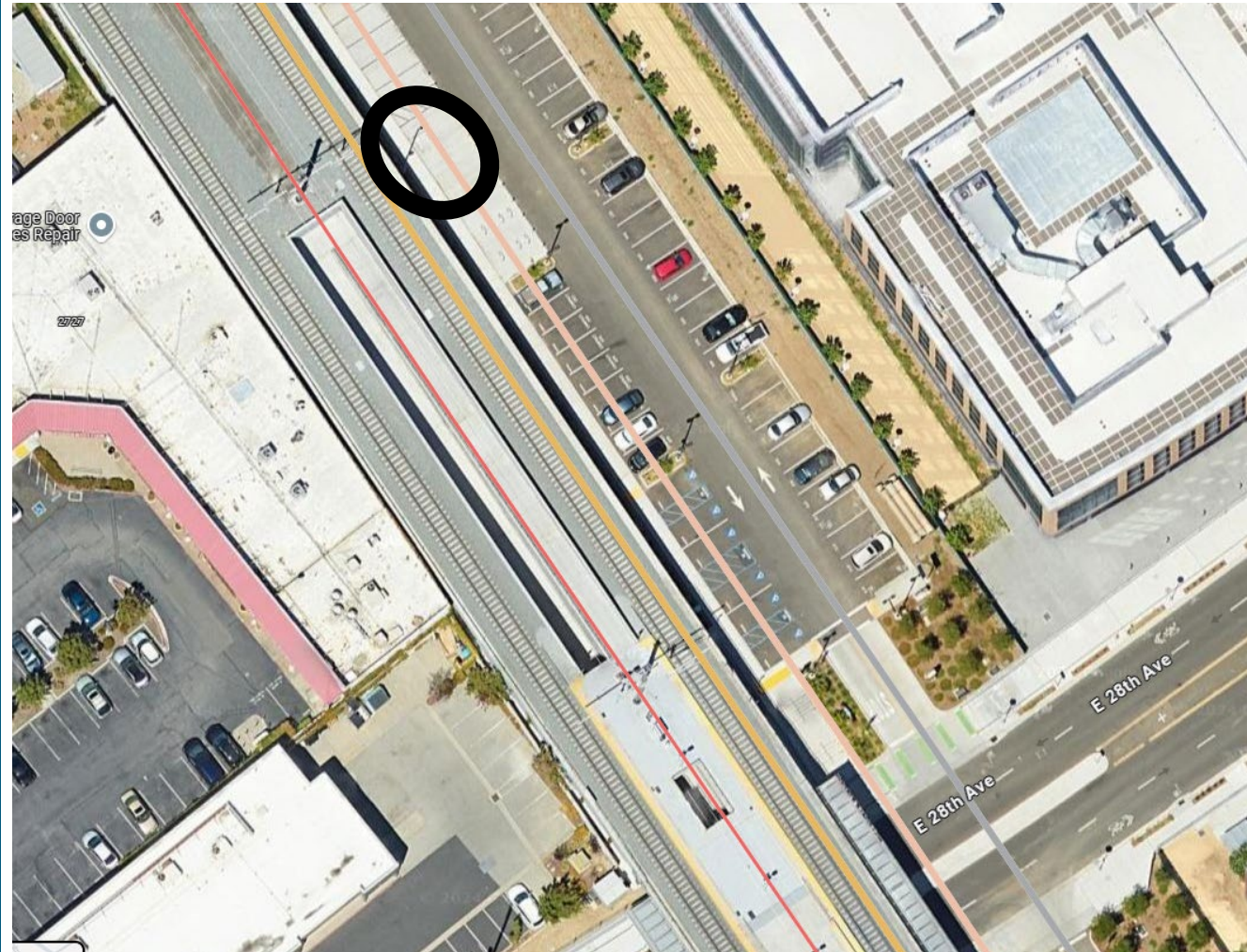
Hillsdale

Existing: 8 spaces near main station entrance in south parking lot between 28th and 31st Avenues

- Near south ramp to platform

Proposed: 4 XL and 12 standard in north parking lot between 25th and 28th Avenue

- About 1000' from existing lockers
- Near north ramp to platform



Keep blue box area clear if possible.
Video will cover your content.



Belmont

Existing: 16 spaces east of main station entrance

- North of Ralston

Proposed: 3 XL and 2 standard in south parking lot west of tracks

- About 600' from existing
- South of Ralston
- Access to platform without crossing Ralston



Keep blue box area clear if possible.
Video will cover your content.



San Carlos

Existing: 8 spaces south of station building

- Along path to bus stop and parking lot

Proposed: 7 XL and 1 standard north of station building

- About 250' from existing
- Adjacent to southbound platform ramp



Keep blue box area clear if possible.
Video will cover your content.



Redwood City

Existing: 16 spaces along southbound platform

- Near Broadway entrance
- Closer to north track crossing

Proposed: 4 XL and 8 standard along southbound platform near clock tower

- About 250' from existing
- Aligned with James Ave entrance
- Closer to south track crossing



Keep blue box area clear if possible.
Video will cover your content.



Menlo Park

Existing: 8 spaces along Oak Grove

- Adjacent to north track crossing

Proposed: 3 XL and 10 standard along Ravenswood

- About 900' from existing
- Adjacent to south track crossing



Keep blue box area clear if possible.
Video will cover your content.



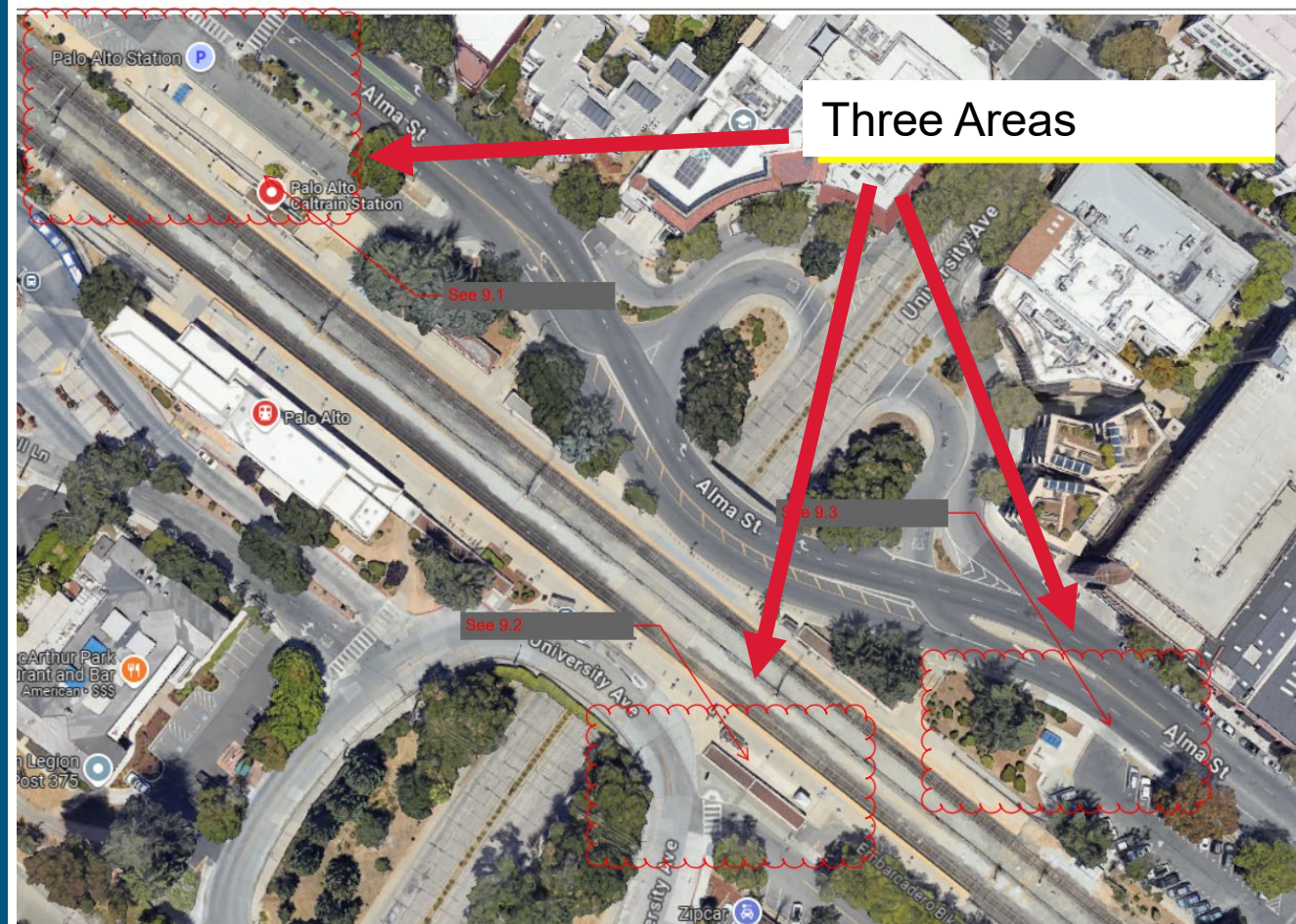
Palo Alto

Existing: 16 spaces on northbound side

- 2 areas with 8 spaces each

Proposed: 8 XL and 24 standard on northbound side; 12 XL and 1 standard on southbound side

- Near various entrance points



Keep blue box area clear if possible.
Video will cover your content.



California Avenue

Existing: 8 spaces on southbound side

Proposed: 4 XL and 12 standard

- Incorporates existing 8 spaces for a total of 24 spaces



Keep blue box area clear if possible.
Video will cover your content.



San Antonio

Existing: 8 spaces at south end of southbound platform

- Adjacent to tunnel crossing of tracks

Proposed: 4 XL and 6 standard along Central Expressway

- About 1000' from existing
- Former home of mechanical lockers
- North end of northbound platform



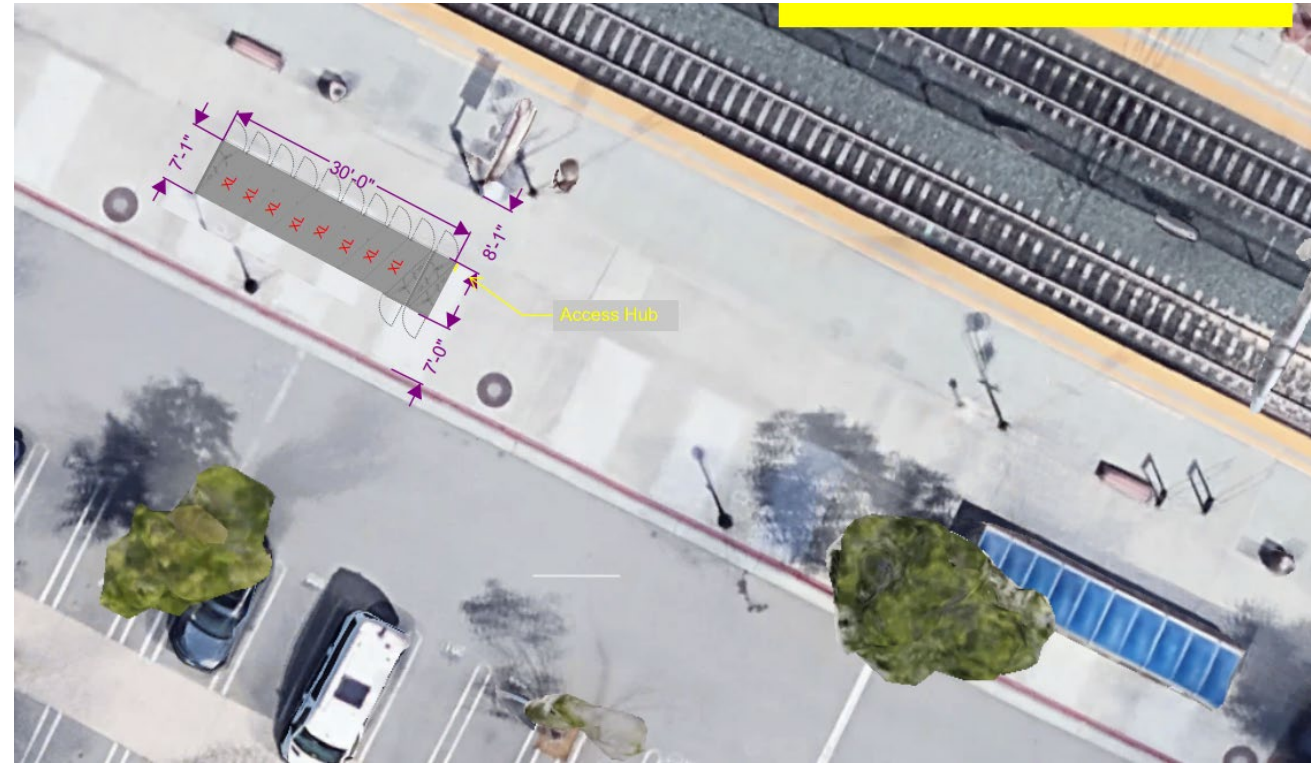
Keep blue box area clear if possible.
Video will cover your content.



Mountain View

Existing: 36 spaces along southbound platform

Proposed: 8 XL and 4 standard along southbound platform



Keep blue box area clear if possible.
Video will cover your content.



Sunnyvale

Existing: 20 spaces along southbound platform

- Not shown in photo but recently moved to the left of proposed lockers

Proposed: 4 XL and 6 standard along southbound platform



Keep blue box area clear if possible.
Video will cover your content.



Santa Clara

Existing: 12 spaces near southbound platform

Proposed: 2 XL and 4 standard along southbound platform



Keep blue box area clear if possible.
Video will cover your content.

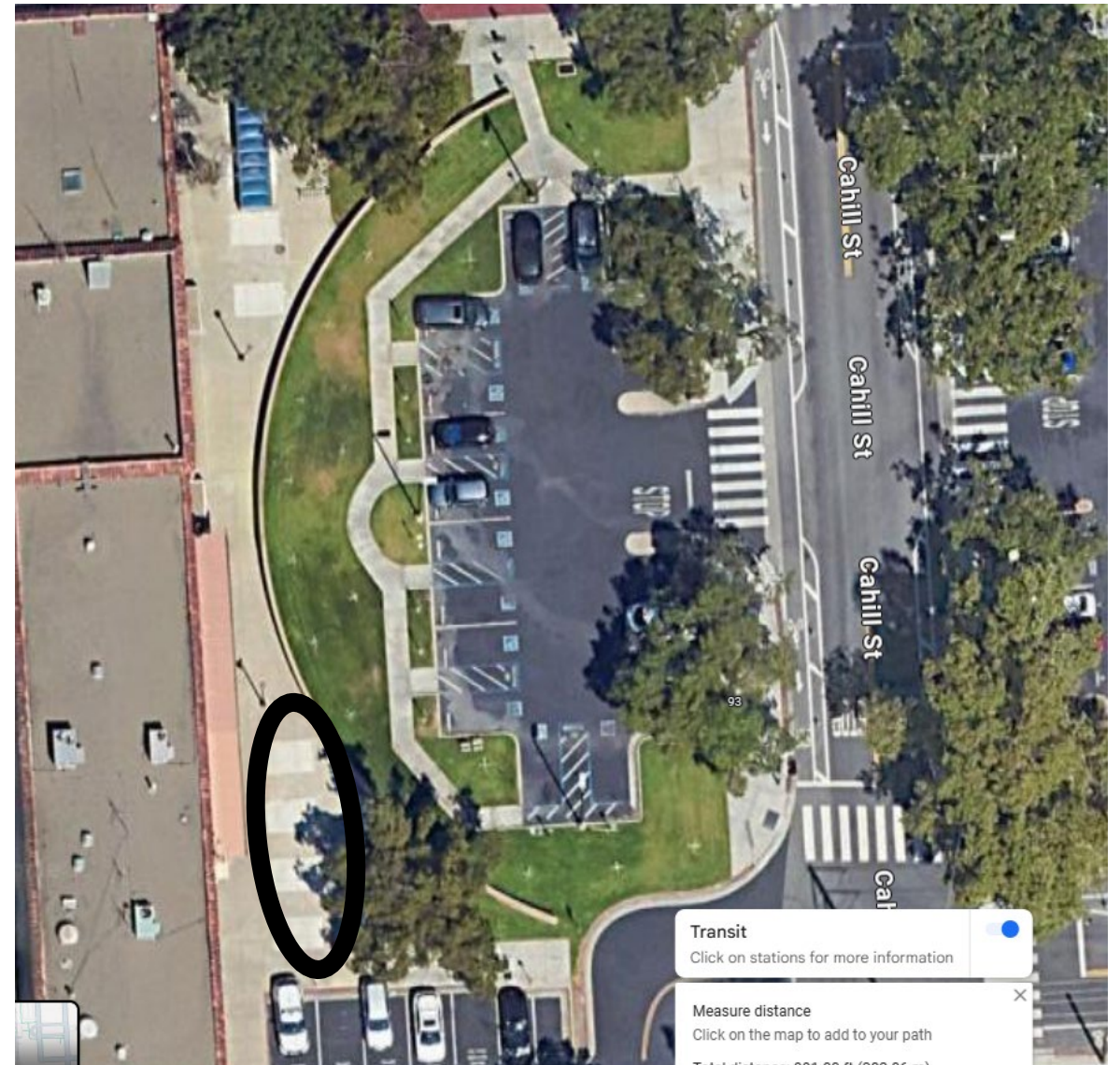


San Jose Diridon

Existing: 16 spaces left of main station entrance

Proposed: 6 XL and 8 standard near existing

- Near the existing lockers
- Former home of mechanical lockers



Video will cover your content.



Promotion Coming

- Looking into ideas for promotions
 - Earth Day (April)
 - Bike Month (May)
 - First summer of electric service
- BATAC ideas are welcome

Keep blue box area clear if possible.
Video will cover your content.



Thank you!

FOR MORE INFORMATION

WWW.CALTRAIN.COM

Keep white box area clear if possible.
Video will cover your content.

