



Bike Board First Pilot Program

Bicycle Advisory Committee

1/18/2018

Rail Operations

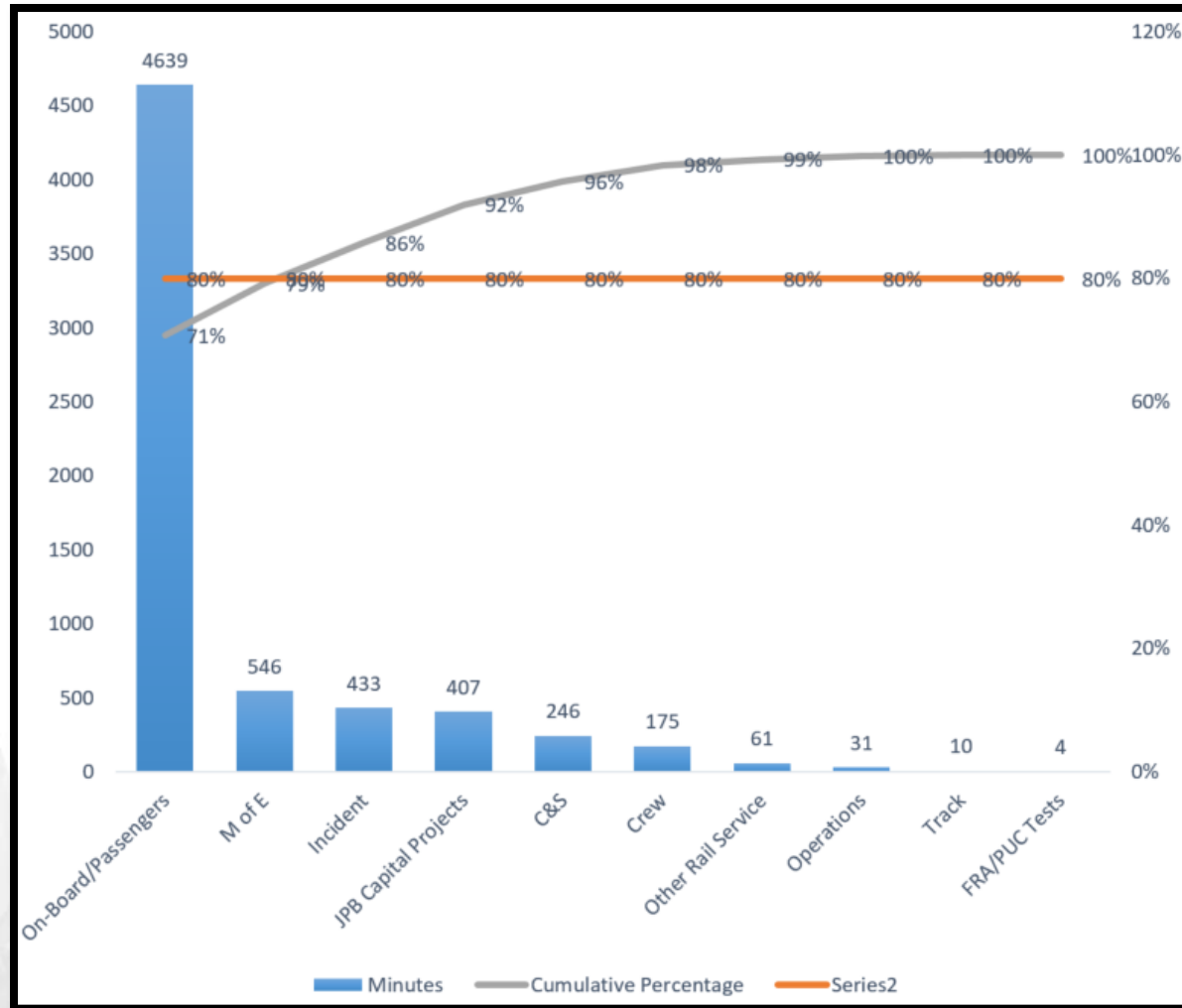
Agenda

- I. Background
- II. Pilot Description
- III. Pilot Findings & Challenges
- IV. Next Steps
- V. Questions

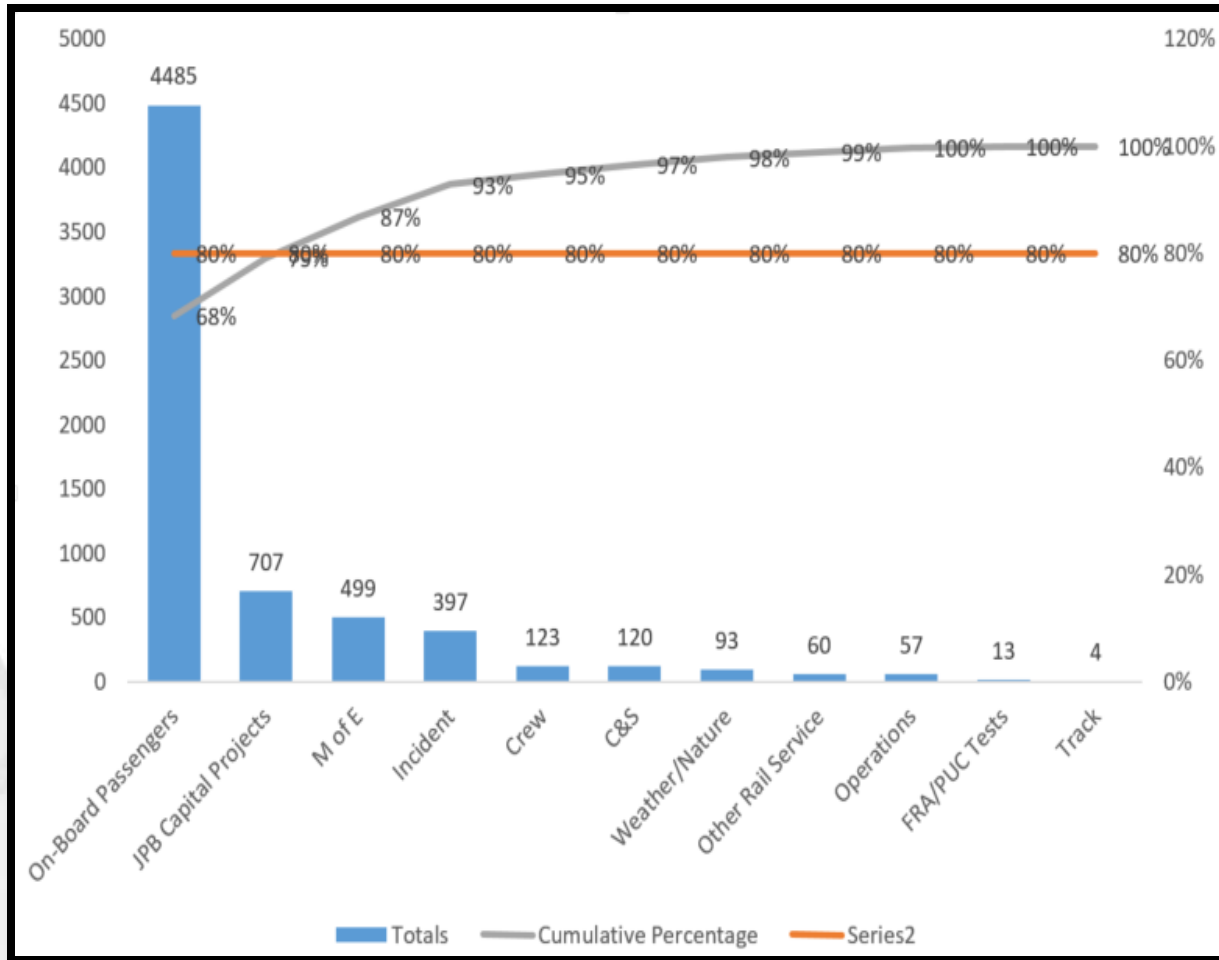
Delay Minutes by Type

Calendar Year 2017		
<u>Type</u>	<u>Minutes</u>	<u>Percentage</u>
C&S	1688	2%
Commercial Outage	13	Less than 1%
Crew	2188	2.6%
FRA/PUC Tests	176	Less than 1%
Incident	10012	11.9%
JPB Capital Projects	3305	3.9%
MofE	6774	8%
On-Board/Passengers (Bikes, Luggage, PNAs)	55465	66%
Operations	620	Less than 1%
Other Rail Service	2355	2.8%
Track	384	Less than 1%
Vandalism	65	Less than 1%
Weather/Nature	864	1%
Grand Total 83909 Minutes of Delay		

November Delays



December Delays



Pilot Description

Pre-Implementation Data Review

- **Top Station Bike Delays**
- **On Site Observations**

Pilot Stations

- **Mountain View**
- **Sunnyvale**
- **Redwood City**

Pilot Description

Implementation

- **TASI & JPB Representatives on the platforms to inform passengers prior to train arriving**
- **Live/Automated Messages on Station Intercom System**
- **VMS Messages**
- **Conductors and Assistant Conductors on the platforms**

Pilot Description

Duration

- **Initial Kickoff through last three weeks in December 2017**
- **Discussing adjustments for future**

Initial Findings & Challenges

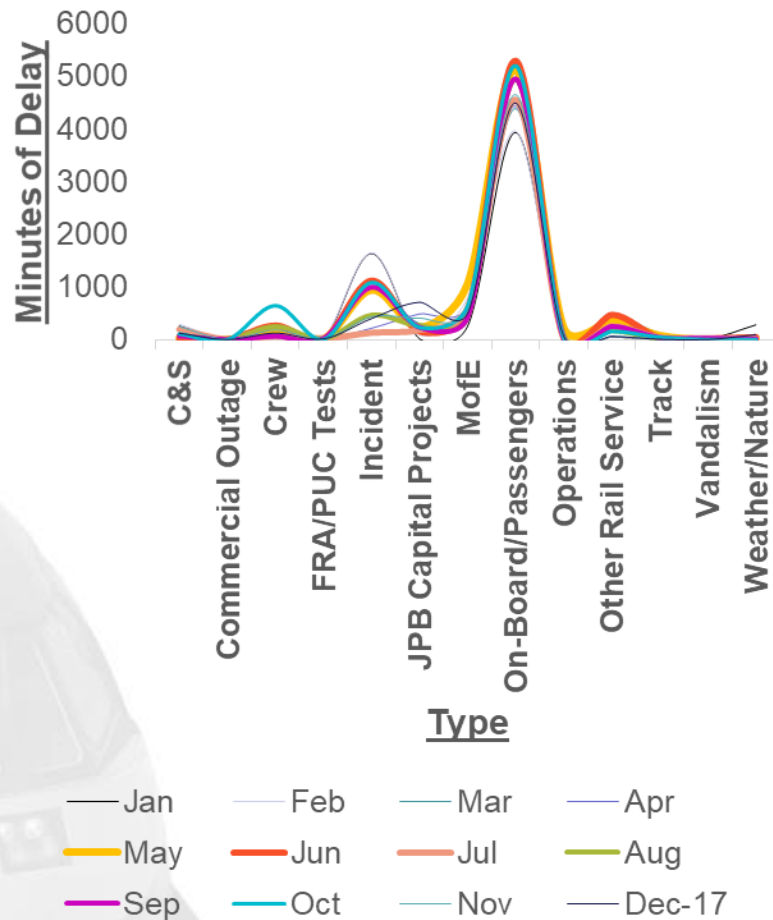
Findings

- **October Bike Delay Minutes: 1369**
- **November Bike Delay Minutes: 1437**
- **December Bike Delay Minutes: 1352**

Challenges

- **Participation**
- **Communication**
- **Holiday and cold-weather season**

Calendar Year 2017



On-Board/Passengers	
Month	Minutes
Jan	3926
Feb	3953
Mar	4380
Apr	4424
May	5115
Jun	5287
Jul	4545
Aug	4942
Sep	4571
Oct	5192
Nov	4645
Dec	4485

Next Steps

- **Run pilot in April for one month at same three stations**
- **Change methodology**
- **Collect hard data**
- **Use venues such as Twitter, Facebook and Caltrain website to promote process, in conjunction to existing apparatuses**
- **Examine possibility of increasing manpower for pilot implementation**

QUESTIONS?