

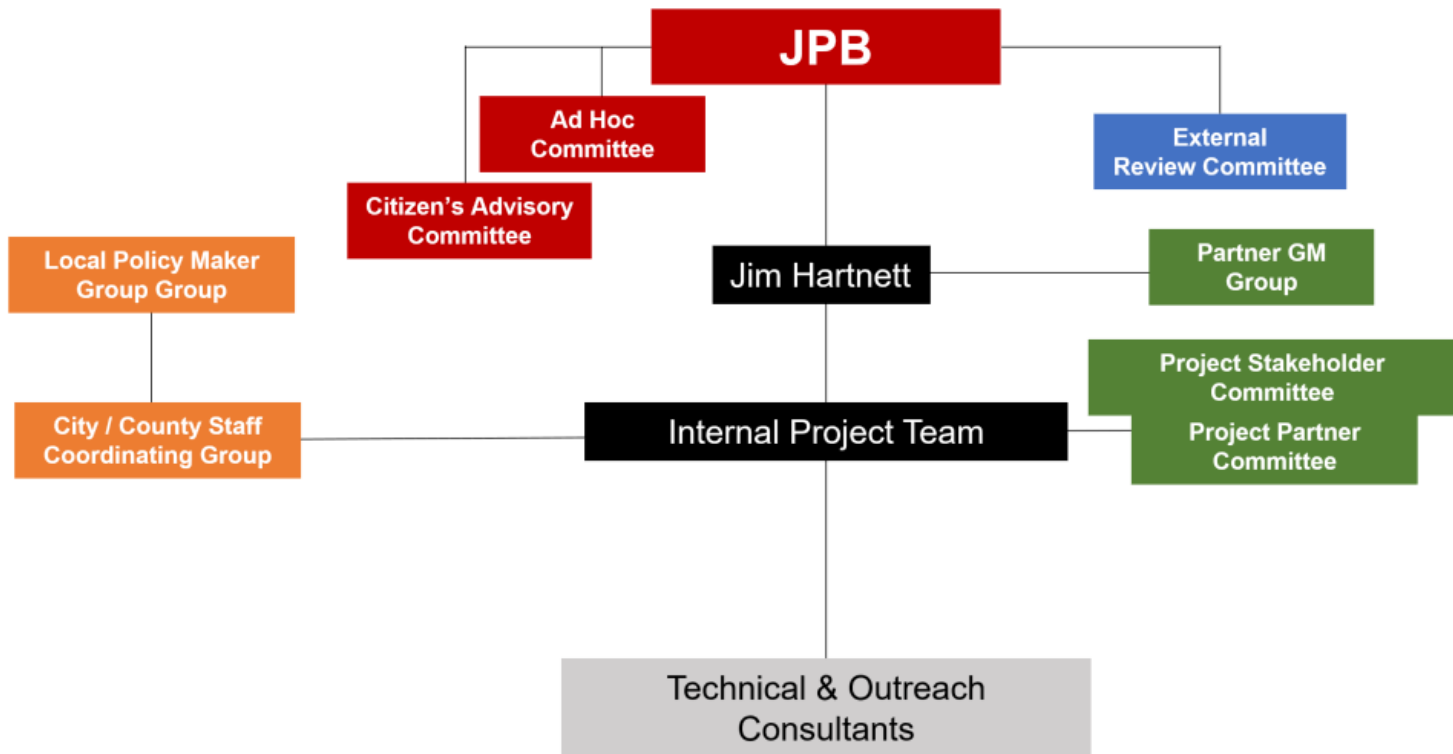


# Caltrain Business Plan

## Project Update

June 2018

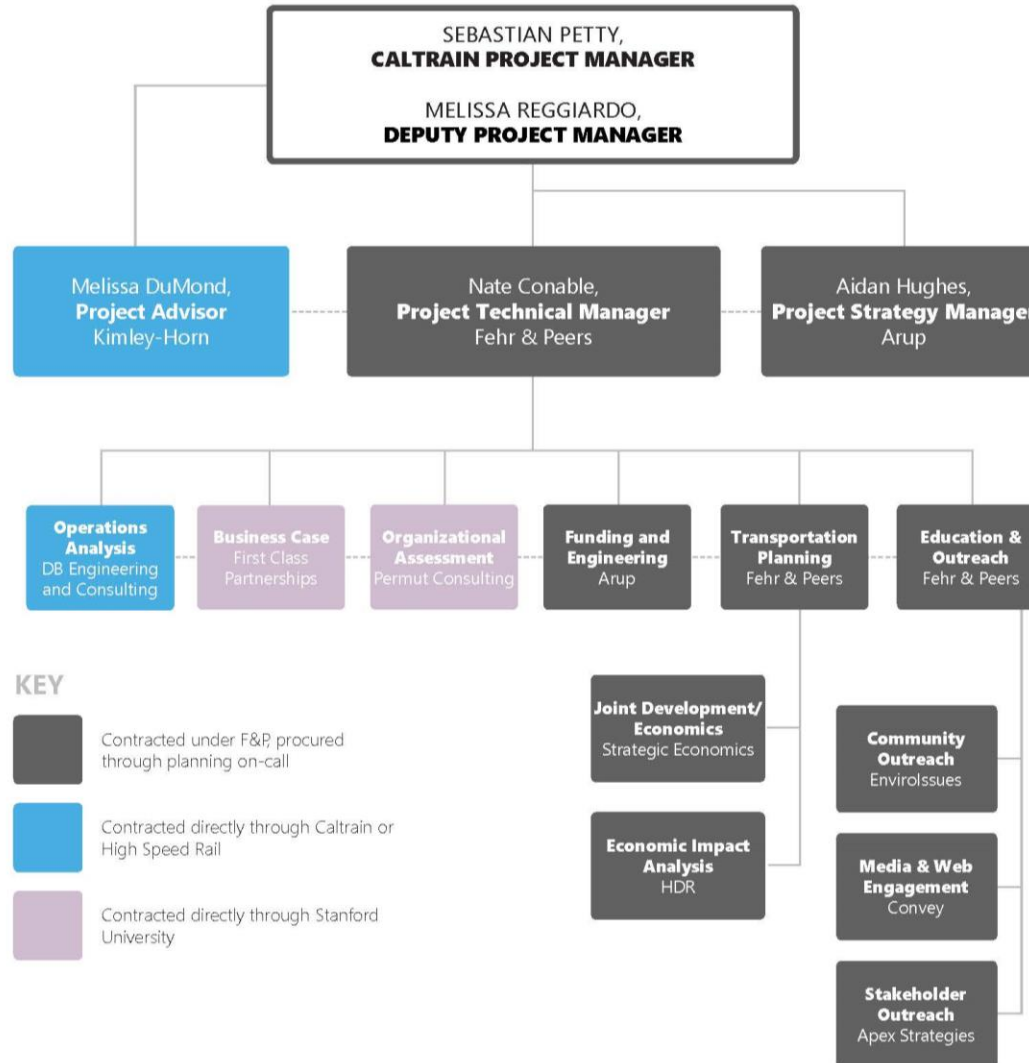
# Project Structure



# Consultant Team

- Local, national and international expertise
- Interdisciplinary team with participation by multiple firms
- Combines resources (~\$5m) contracted through Caltrain and Stanford into an integrated team structure

# Consultant Team



# Project Management

Category	Team
Project Management	Fehr and Peers (Nate Conable)
Strategy Management	Arup (Aidan Hughes)
Outside Advising	Kimley Horn (Melissa DuMond)

# Technical Analysis

Category	Team
Market analysis and travel demand modeling	Fehr and Peers
Service planning and infrastructure specification	DB Engineering & Consulting (joint work with/through HSR)
Capital project costing and funding	Arup
Integrated business model development and business case strategy	First Class Partnerships (through Stanford)
Community interface assessment	Fehr and Peers
Joint development / economics	Strategic Economics
Economic impact analysis	HDR Decision Economics
Organizational assessment and Strategy	Permut Consulting (through Stanford)

# Production, Outreach & Engagement

Category	Team
Project production	Fehr and Peers
Outreach support	Fehr and Peers
Stakeholder engagement strategy	Arup, Apex Strategies
Community outreach	Envirolssues
Media and web engagement	Convey

# Key Milestones

**Business  
Strategy**  
(Spring 2018)

**Service  
Vision**  
(End of 2018)

**Business  
Plan**  
(Summer 2019)



# Questions